

BRONZE BOUNCE

BOUNCY JELLY EYESHADOW

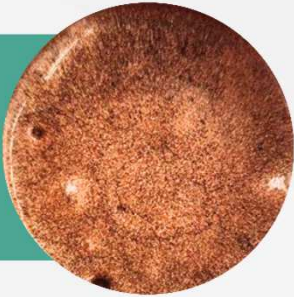
031.D8

EYES

GP2024INCOS



ISO 16128



OVERVIEW

This innovative eyeshadow is your ticket to effortlessly radiant eyes with a touch of luxury. Crafted with Amaze® XT and SolAmaze™ Natural, this formula glides smoothly onto your eyelids, imparting a velvety softness that lasts all day. ExpertGel® EG412 ensures a bouncy, cushiony texture that's easy to apply, allowing you to create stunning eye looks with ease. It is a must-have addition to your makeup collection, with the opulent hues of Prestige® Bright Red Glow and Prestige® Bright Bronze that deliver a rich, buildable color payoff that catches the light and enhances your eyes' natural beauty. The preservative Sensicare® C1090 ensures a strong stability while staying at a friendly pH for your eyes area.

Phase	Trade Name	Supplier	European I.N.C.I. Name	Function	%
A	Demineralized water	/	Aqua	/	32,70
B	Glycerin		Glycerin	Humectant	3,00
B	Amaze® XT	NOURYON*	Dehydroxanthan Gum	Suspensive agent	0,30
C	SolAmaze™ Natural		Diisostearoyl Polyglyceryl 3 Dimer Dilinoleate, Caprylic/Capric Triglyceride	Film former	3,00
D	Demineralized water	/	Aqua	/	45,00
E	ExpertGel® EG412	POLYMEREXPERT*	Poloxamer 407, PPG-12/SMDI Copolymer	Thickener	5,00
F	Prestige® Bright Red Glow (35390)	SUDARSHAN*	Mica, CI 77491	Effect pigment	5,00
	Prestige® Bright Bronze (35170)		Mica, CI 77491		5,00
G	Sensicare® C 1090	CHEMIPOL*	Phenoxyethanol, Ethylhexylglycerin	Preservative	1,00

* Please contact us to know in which country we are supplier of

PROCESS

PHASE A : Place under stirring.
PHASE B : Pre-mix then add it to phase A and stir for 15 minutes until homogeneous.
PHASE C : Add it to phase AB and homogenize.
PHASE D : Place at 4°C for 1 hour.
PHASE E : Add slowly to phase D and stir for 30 minutes until homogeneous.
Add phase DE to phase ABC and stir until homogeneous.
PHASE F : Pre-mix then add it to phase ABCDE and homogenize.
PHASE G : Add it to phase ABCDEF and homogenize.
Adjust pH to 7,0.

PROPERTIES

APPEARANCE : Bronze shiny bouncy thick gel.

VISCOSITY : N/C.

pH : 7,0.