

# HOCKEY SUR PLACE

LONG-LASTING EYE LINER - SHADE PINK

FR24COSMET.HOCKEYPINK



ISO 16128

FR2024COSMET



## OVERVIEW

Brighten up your eyes and shine on the catwalk with this long-wearing formula in intense colours. Thanks to competitive film-forming agents, this hybrid eyeliner and eyeshadow product stands up to the test without migrating or running. Its adjustable coverage and creamy texture, ideal for easy and precise application, adapt to your every whim.

Phase	Trade Name	Supplier	European I.N.C.I. Name	Function	%
A	Demineralized water	/	Aqua	/	to 100
	Hydrolite® 5 green	SYMRISE*	Pentylene Glycol	Multifunctional	1,50
	SymSave® H	SYMRISE*	Hydroxyacetophenone	Preservative	0,50
	Eastman AQ™ 55S polymer	EASTMAN*	Polyester-5	Film former	5,00
B	Glycerin	/	Glycerin	Humectant	4,00
	Optigel-CK	BYK*	Bentonite	Thickener	5,00
C	Pellicer™ LB-30G	ASAHI KASEI*	Aqua, Sodium Dilauramidoglutamide Lysine, Butylene Glycol	Emulsifier	0,30
D	Eastman Sustane™ SAIB Food Grade Kosher	EASTMAN*	Sucrose Acetate Isobutyrate	Film former	5,00
	Sabowax G 40 MB	SABO*	Glyceryl Stearate	Emulsifier	2,00
	Sumac Wax / Berry Wax	NOREVO*	Rhus Succedanea Fruit Cera / Rhus Verniciflua Peel Cera	Consistency agent	6,00
	Harmonie™ Soft fluid	MOMENTIVE*	Dodecane, C9-12 Isoalkane, Decane	Emollient	5,00
	EcoCeramide® LCS	IC BIO*	Butyrospermum Parkii Butter, Moringa Oleifera Seed Oil, Limnanthes Alba Seed Oil, Macadamia Integrifolia Seed Oil, Ceramide NP, Phytosphingosine, Glycerin, Hydrogenated Lecithin	Active	0,50
E	Amylopectin Powder F	NOUPOTENTIA*	Amylopectin	Absorbing Powder	4,00
	Mirage® Glamour Gold	ECKART*	Calcium Sodium Borosilicate, CI 77891, Tin Oxide	Effect pigment	3,00
	SynCrystal® Rose Opal	ECKART*	Synthetic Fluorophlogopite, CI 77891, CI 77491, Tin Oxide	Effect pigment	6,00
	Mirage® Glamour Red	ECKART*	Calcium Sodium Borosilicate, CI 77891, Tin Oxide	Effect pigment	2,00
F	Decanox® MTS-50	ADM*	Tocopherol, Glycine Soja Oil	Anti-oxidant	0,15

\* Please contact us to know in which country we are supplier of  
SAFIC' Care is a trademark of SAFIC-ALCAN

## PROCESS



**PHASE A :** mix all the ingredients of Phase A and heat it until 75 °C, until a clear solution is obtained.

**PHASE B :** pre-mix Phase B. Add it to phase A while stirring highly.

**PHASE C :** add Phase C to AB.

**PHASE D :** mix all the ingredients of phase D and melt them until 75 °C. Add Phase D into ABC while stirring highly (2200 rpm). A paste is formed.

**PHASE E :** add one by one all the ingredients of phase E. Let cool.

**PHASE F :** add phase F.

Pour the formula into the mold while the paste is still flexible.

## PROPERTIES



**APPEARANCE :** pink and creamy paste

**VISCOSITY :** /

**pH :** 5,0-5,50

# HOCKEY SUR PLACE

LONG-LASTING EYE LINER - SHADE GREEN

FR24COSMET.HOCKEYGREEN



ISO 16128

FR2024COSMET



## OVERVIEW

Brighten up your eyes and shine on the catwalk with this long-wearing formula in intense colours. Thanks to competitive film-forming agents, this hybrid eyeliner and eyeshadow product stands up to the test without migrating or running. Its adjustable coverage and creamy texture, ideal for easy and precise application, adapt to your every whim.

Phase	Trade Name	Supplier	European I.N.C.I. Name	Function	%
A	Demineralized water	/	Aqua	/	to 100
	Hydrolite® 5 green	SYMRISE*	Pentylene Glycol	Multifunctional	1,50
	SymSave® H	SYMRISE*	Hydroxyacetophenone	Preservative	0,50
	Eastman AQ™ 55S polymer	EASTMAN*	Polyester-5	Film former	5,00
B	Glycerin	/	Glycerin	Humectant	4,00
	Optigel-CK	BYK*	Bentonite	Thickener	5,00
C	Pellicer™ LB-30G	ASAHI KASEI*	Aqua, Sodium Dilauramidoglutamide Lysine, Butylene Glycol	Emulsifier	0,30
D	Eastman Sustane™ SAIB Food Grade Kosher	EASTMAN*	Sucrose Acetate Isobutyrate	Film former	5,00
	Sabowax G 40 MB	SABO*	Glyceryl Stearate	Emulsifier	2,00
	Sumac Wax / Berry Wax	NOREVO*	Rhus Succedanea Fruit Cera / Rhus Verniciflua Peel Cera	Consistency agent	6,00
	Harmonie™ Soft fluid	MOMENTIVE*	Dodecane, C9-12 Isoalkane, Decane	Emollient	5,00
	Decanox® MTS-50	ADM*	Tocopherol, Glycine Soja Oil	Anti-oxidant	0,15
	EcoCeramide® LCS	IC BIO*	Butyrospermum Parkii Butter, Moringa Oleifera Seed Oil, Limnanthes Alba Seed Oil, Macadamia Integriifolia Seed Oil, Ceramide NP, Phytosphingosine, Glycerin, Hydrogenated Lecithin	Active	0,50
E	Amylopectin Powder F	NOUPOTENTIA*	Amylopectin	Absorbing Powder	4,00
	Prestige® Gold Glow 35382	SUDARSHAN*	Mica, CI 77891	Effect pigment	3,00
	Prestige® Emerald 35161	SUDARSHAN*	Mica, CI 77891, CI 77510, CI 77491, Tin Oxide	Effect pigment	6,00
	Prestige® Green Glam 35397	SUDARSHAN*	Mica, CI 77891	Effect pigment	2,00
	Prestige® Radiant Holo Green 35476	SUDARSHAN*	Mica, CI 77891, CI 77499	Effect pigment	3,00

\* Please contact us to know in which country we are supplier of SAFIC' Care is a trademark of SAFIC-ALCAN

## PROCESS



**PHASE A :** mix all the ingredients of Phase A and heat it until 75 °C, until a clear solution is obtained.

**PHASE B :** pre-mix Phase B. Add it to phase A while stirring highly.

**PHASE C :** add Phase C to AB.

**PHASE D :** mix all the ingredients of phase D and melt them until 75 °C. Add Phase D into ABC while stirring highly (2200 rpm). A paste is formed.

**PHASE E :** add one by one all the ingredients of phase E. Let cool.

**PHASE F :** add phase F.

Pour the formula into the mold while the paste is still flexible.

## PROPERTIES



**APPEARANCE :** green and creamy paste

**VISCOSITY :** /

**pH :** 5,0-5,50

# HOCKEY SUR PLACE

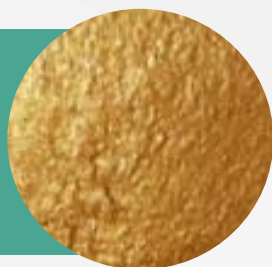
LONG-LASTING EYE LINER - SHADE GOLD

FR24COSMET.HOCKEYGOLD



ISO 16128

FR2024COSMET



## OVERVIEW

Brighten up your eyes and shine on the catwalk with this long-wearing formula in intense colours. Thanks to competitive film-forming agents, this hybrid eyeliner and eyeshadow product stands up to the test without migrating or running. Its adjustable coverage and creamy texture, ideal for easy and precise application, adapt to your every whim.

Phase	Trade Name	Supplier	European I.N.C.I. Name	Function	%
A	Demineralized water	/	Aqua	/	to 100
	Hydrolite® 5 green	SYMRISE*	Pentylene Glycol	Multifunctional	1,50
	SymSave® H	SYMRISE*	Hydroxyacetophenone	Preservative	0,50
	Eastman AQ™ 55S polymer	EASTMAN*	Polyester-5	Film former	5,00
B	Glycerin	/	Glycerin	Humectant	4,00
	Optigel-CK	BYK*	Bentonite	Thickener	5,00
C	Pellicer™ LB-30G	ASAHI KASEI*	Aqua, Sodium Dilauramidoglutamide Lysine, Butylene Glycol	Emulsifier	0,30
D	Eastman Sustane™ SAIB Food Grade Kosher	EASTMAN*	Sucrose Acetate Isobutyrate	Film former	5,00
	Sabowax G 40 MB	SABO*	Glyceryl Stearate	Emulsifier	2,00
	Sumac Wax / Berry Wax	NOREVO*	Rhus Succedanea Fruit Cera / Rhus Verniciflua Peel Cera	Consistency agent	6,00
	Harmonie™ Soft fluid	MOMENTIVE*	Dodecane, C9-12 Isoalkane, Decane	Emollient	5,00
	Decanox® MTS-50	ADM*	Tocopherol, Glycine Soja Oil	Anti-oxidant	0,15
	EcoCeramide® LCS	IC BIO*	Butyrospermum Parkii Butter, Moringa Oleifera Seed Oil, Limnanthes Alba Seed Oil, Macadamia Integrifolia Seed Oil, Ceramide NP, Phytosphingosine, Glycerin, Hydrogenated Lecithin	Active	0,50
E	Amylopectin Powder F	NOUPOTENTIA*	Amylopectin	Absorbing Powder	4,00
	ImerCare® 6M	IMERYS*	Mica	Absorbing powder	5,00
	SynCrystal® Soft Autumn Gold	ECKART*	Synthetic Fluorphlogopite, CI 77891, CI 77491, Tin Oxide	Effect pigment	5,00
	SynCrystal® Spring Gold	ECKART*	Synthetic Fluorphlogopite, CI 77891, CI 77491, Tin Oxide	Effect pigment	5,00
	Mirage® Holo Magic	ECKART*	Calcium Sodium Borosilicate, CI 77891, Tin Oxide, CI 77492, Silica	Effect pigment	5,00

\* Please contact us to know in which country we are supplier of  
SAFIC' Care is a trademark of SAFIC-ALCAN

## PROCESS



**PHASE A :** mix all the ingredients of Phase A and heat it until 75 °C, until a clear solution is obtained.

**PHASE B :** pre-mix Phase B. Add it to phase A while stirring highly.

**PHASE C :** add Phase C to AB.

**PHASE D :** mix all the ingredients of phase D and melt them until 75 °C. Add Phase D into ABC while stirring highly (2200 rpm). A paste is formed.

**PHASE E :** add one by one all the ingredients of phase E. Let cool.

**PHASE F :** add phase F.

Pour the formula into the mold while the paste is still flexible.

## PROPERTIES



**APPEARANCE :** gold and creamy paste

**VISCOSITY :** /

**pH :** 5,0-5,50

# HOCKEY SUR PLACE

LONG-LASTING EYE LINER - SHADE BLACK

FR24COSMET.HOCKEYBLACK



ISO 16128

FR2024COSMET



## OVERVIEW

Brighten up your eyes and shine on the catwalk with this long-wearing formula in intense colours. Thanks to competitive film-forming agents, this hybrid eyeliner and eyeshadow product stands up to the test without migrating or running. Its adjustable coverage and creamy texture, ideal for easy and precise application, adapt to your every whim.

Phase	Trade Name	Supplier	European I.N.C.I. Name	Function	%
A	Demineralized water	/	Aqua	/	to 100
	Hydrolite® 5 green	SYMRISE*	Pentylene Glycol	Multifunctional	1,50
	SymSave® H	SYMRISE*	Hydroxyacetophenone	Preservative	0,50
	Eastman AQ™ 55S polymer	EASTMAN*	Polyester-5	Film former	5,00
B	Glycerin	/	Glycerin	Humectant	6,00
	Optigel-CK	BYK*	Bentonite	Thickener	3,00
C	Pellicer™ LB-30G	ASAHI KASEI*	Aqua, Sodium Dilauramidoglutamide Lysine, Butylene Glycol	Emulsifier	0,30
D	Eastman Sustane™ SAIB Food Grade Kosher	EASTMAN*	Sucrose Acetate Isobutyrate	Film former	5,00
	Sabowax G 40 MB	SABO*	Glyceryl Stearate	Emulsifier	2,00
	Sumac Wax / Berry Wax	NOREVO*	Rhus Succedanea Fruit Cera / Rhus Verniciflua Peel Cera	Consistency agent	6,00
	Harmonie™ Soft fluid	MOMENTIVE*	Dodecane, C9-12 Isoalkane, Decane	Emollient	12,00
	EcoCeramide® LCS	ADM*	Tocopherol, Glycine Soja Oil	Anti-oxidant	0,50
	Decanox® MTS-50	IC BIO*	Butyrospermum Parkii Butter, Moringa Oleifera Seed Oil, Limnanthes Alba Seed Oil, Macadamia Integrifolia Seed Oil, Ceramide NP, Phytosphingosine, Glycerin, Hydrogenated Lecithin	Active	0,15
E	Amylopectin Powder F	NOUPOTENTIA*	Amylopectin	Absorbing Powder	4,00
	Prestige® Infinite Black 35474	SUDARSHAN*	Mica, CI 77499	Effect pigment	18,00
	Prestige® Gold Glow 35382	SUDARSHAN*	Mica, CI 77891	Effect pigment	0,50
	Sumicos™ Cream Mica 43038	SUDARSHAN*	Mica	Sensory agent	5,00

\* Please contact us to know in which country we are supplier of  
SAFIC' Care is a trademark of SAFIC-ALCAN

## PROCESS



**PHASE A :** mix all the ingredients of Phase A and heat it until 75 °C, until a clear solution is obtained.

**PHASE B :** pre-mix Phase B. Add it to phase A while stirring highly.

**PHASE C :** add Phase C to AB.

**PHASE D :** mix all the ingredients of phase D and melt them until 75 °C. Add Phase D into ABC while stirring highly (2200 rpm). A paste is formed.

**PHASE E :** add one by one all the ingredients of phase E. Let cool.

**PHASE F :** add phase F.

Pour the formula into the mold while the paste is still flexible.

## PROPERTIES



**APPEARANCE :** black and creamy paste

**VISCOSITY :** /

**pH :** 5,0-5,50